

ARCHITECTURAL-URBAN CONCEPT „RAJLOVAC“

Contacts: Mursel
Sulja, CEO

e-mail:
mursel@skuter.ba

Phone:
0038761 130 344

Sarajevo, 2018.

„DRVOPROMET“ ltd. Sarajevo

BRIEF DESCRIPTION

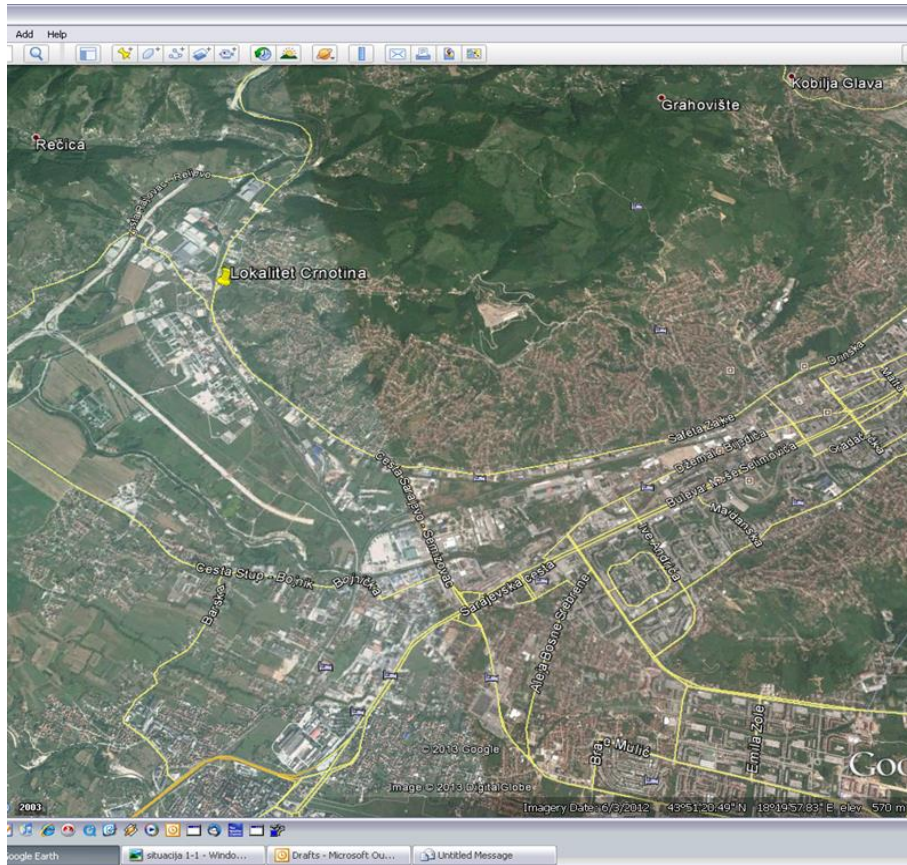
Distinguished customers and potential investors, we offer You for sale or as joint investment the land located in the industrial and residential zone in suburb Rajlovac on highly attractive location. What we want to emphasize is that the plot is suitable for various types of investments, ranging from industrial to residential, business and hospitality projects. The land is owned by “Drvopromet” Ltd.

LOCATION AND AREA

- ▶ The north entrance–exit Rajlovac, in the municipality of Novi Grad Sarajevo. The land is a lowland without visible deformation of the terrain and is a favorite habitat of many distribution and marketing centers, manufacturing sites and restaurants.



AERIAL FOTO 1



Distance from Sarajevo International Airport is only 5 km away, while the central customs terminal Sarajevo is 3 km from the plot. Land occupies an area of approximately 50,000 m², is positioned along the main street with all its width which leaves great opportunities to create the infrastructure on the land.

AERIAL FOTO 2

Excellent conditions and very well solved traffic communication and transport can be easily organized due to position to the main highway road A 1 corridor.



CONCEPT



- Land occupies an area of 50,000 m²
- Land value 2.5 mil. €
- CONCEPT value may vary from 10 to 20 mil. €